

RECORD AND ILLUSTRATION OF SOME INTERESTING  
MOTHS FLYING IN TEXAS (SPHINGIDAE, CTENUCHIDAE,  
NOCTUIDAE, NOTODONTIDAE, GEOMETRIDAE,  
PYRALIDAE, COSSIDAE)

ANDRÉ BLANCHARD

P. O. Box 20304, Houston, Texas 77025

This paper illustrates and records the presence in Texas of some moths which are considered interesting because they are either rare, or not included in the McDunnough check list. Some of them are probably new records for the United States.

SPHINGIDAE

*Amplypterus donysa* (Druce). Fig. 1.

Ann. Mag. Nat. Hist., Ser. 6, 4: 78, 1889.

Big Bend Nat. Park, Green Gulch, 3 May 1972, 1 ♂; 6 May 1972, 1 ♀; 12 May 1972, 1 ♀. The male is rubbed but the females are very nice, and it seems probable that Green Gulch or some other place nearby was the breeding area. Dr. J. G. Franclemont who was with us when we discovered these insects in our traps says (in litt.) “. . . from what little is known about the host plants of the group, I judge that larva feeds on some member of the Anacardiaceae, possibly *Rhus microphylla* or *R. triloba*.” Both of these were growing where the moth was taken. The forewings are different shades of ashy green, the hindwings mostly of the color of crushed strawberries.

CTENUCHIDAE

*Syntomeida melanthus* (Cramer). Fig. 2.

Pap. Exot. 3: 94, 175 (index); pl. 248, fig. c, 1779.

Big Bend Nat. Park, 21 specimens, all taken in the desert around the Chisos Mountains, from early April to late June, and from late August to early October. The wings are bluish black with yellowish-white spots.

*Episcepsis inornata* Walker. Fig. 3.

List Lep. Ins. Coll. Brit. Mus. 7: 1636, 1856.

Santa Ana National Wildlife Refuge, 14 November 1971, 2 ♀♀. The specimen pictured is badly rubbed. The wings are powdery black. The abdomen is sprinkled with shining steel-blue scales.

NOCTUIDAE

*Euxoa xasta* Barnes & McDunnough. Fig. 4.

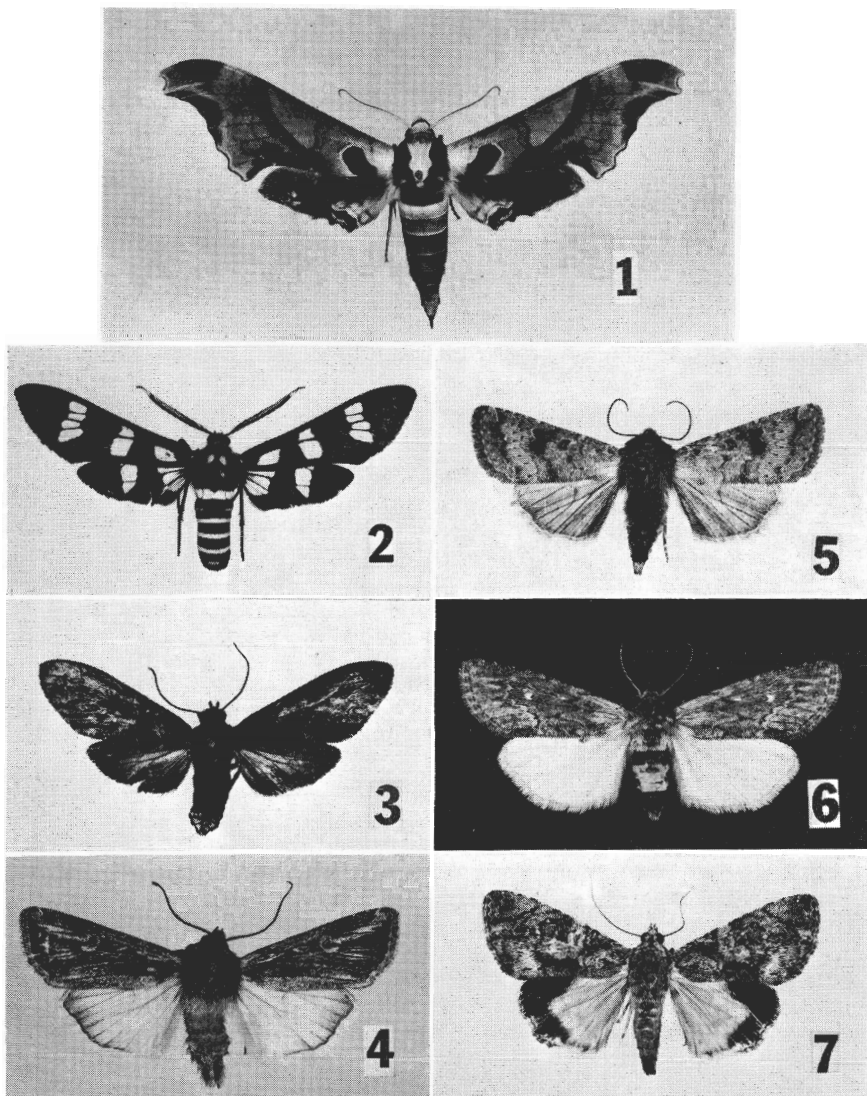
Can. Entomol. 42: 429, 1910.

The rarity of this Agrotinae is my reason for giving my record of captures, although it is included in McDunnough's check list and Kerrville, Texas is the type locality. Fort Davis, 17 May 1966, 1 ♂; 18 May 1971, 1 ♂. Big Bend National Park, Government Spring, 27 March 1971, 1 ♂; 6 May 1972, 1 ♂, 3 ♀♀. Sierra Diablo Wildlife Management Area, 14 July 1971, 1 ♀.

*Eriopyga mulina* Schaus. Fig. 5.

Trans. Amer. Entomol. Soc. 21: 237, 1894.

Big Bend National Park, where trees and brush are growing: Green Gulch, Oak



Figs. 1-7. **1**, *Amphypterus donysa* (Druce) ♀, Big Bend Nat. Pk., Green Gulch, 6 May 1972; 107 mm. **2**, *Syntomeida melanthus* (Cram.) ♂, Big Bend Nat. Pk., Chihuahuah Desert near Nugent Mt., 17 Sept. 1971; 45 mm. **3**, *Episcepsis inornata* Wlk. ♀, Santa Ana Nat. Wildl. Ref., 14 Nov. 1971; 32 mm. **4**, *Euxoa xasta* B. and Mc.D. ♂, Big Bend Nat. Pk. Government Spring, 27 March 1971; 36 mm. **5**, *Eriopyga mulina* Schaus ♀, Big Bend Nat. Pk., Green Gulch, 4 October 1967; 34 mm. **6**, *Emariannia cucullidea* Benj. ♂, Sierra Diablo Wildl. Mgt. Area, 1 Sept. 1970; 36 mm. **7**, *Neophanis respondens* Wlk. ♀, Brownsville, 7 Nov. 1969; 42 mm.

Spring, Government Spring; 13 specimens, one in March, one in May, the others from late September to late October. Forewings different shades of lustrous brown, hindwings more dusky.

*Emariannia cucullidea* Benjamin. Fig. 6.

Pan Pac. Entomol. 9: 3, 1933.

Alpine, 17 Sept. 1962, 1 ♀. Fort Davis, 27–29 Aug. 1964, 2 ♂♂, 2 ♀♀; 6 Sept. 1964, 1 ♂; 28–29 Aug. 1970, 2 ♂♂. Sierra Diablo Wildlife Management Area, 15 July 1969, 1 ♂; 1 Sept. 1970, 1 ♂. The forewings are patterned in dusky brown over a lighter brown background. The hindwings are white.

*Neophanis respondens* Walker. Fig. 7.

List Lep. Ins. Coll. Brit. Mus. 15: 1720, 1858.

Brownsville, 7 Nov. 1969, 1 ♀. Forewings patterned in black over mossy green. Hindwings shiny orange-yellow with black margin.

*Iscadia daemonalis* Dyar. Fig. 8.

Proc. U.S. Nat. Mus. 38: 258, 1910.

Big Bend National Park, Green Gulch, 6 Oct. 1966, 1 ♂. Artesia Wells, LaSalle Co., Chaparral Wildlife Management Area, 28 Sept. 1971, 5 ♂♂; 10 Nov. 1971, 2 ♂♂; 12 June 1972, 1 ♂, 1 ♀. Santa Ana National Wildlife Refuge, 14 Nov. 1971, 1 ♀. Forewings dark blackish brown, tipped with gray, crossed with fine, wavy, transverse black lines. Hindwings white, with black margin in the female.

*Meropleon titan* Todd. Fig. 16.

J. Wash. Acad. Sci. 48(1): 27, 1958.

Canadian, 27 September 1968, 3 ♂♂. This collection extends the known distribution of this species far to the west. Forewings dark brown; hindwings lighter.

*Sigela basipunctaria* Walker. Fig. 9.

List Lep. Ins. Coll. Brit. Mus. 23: 785, 1861.

San Antonio, Mountain View Acres (Roy Kendall's Ebony Hill Laboratory), 9 March 1972, 1 ♂. Fishing camp on Guadalupe River, north of New Braunfels, 12 March 1972, 1 ♂. Black dots on whitish background.

*Matigramma psegrampteryx* Dyar. Fig. 17.

Proc. U.S. Nat. Mus. 44: 301, 1913.

Gamer State Park, 24 March 1965, 1 ♂, (identified by J. G. Franclemont who prepared slide A.B. 4). The wings are different shades of neutral gray.

*Herminodes stigmaphiles* (Dyar). Fig. 18.

Proc. U.S. Nat. Mus. 47: 386, 1914.

Big Bend National Park, Green Gulch, Basin, and desert near Nugent Mountain, end of September 1971, 3 ♂♂, 3 ♀♀; Green Gulch, early May 1972, 2 ♂♂. The insect is different shades of dusky brown.

*Orthogramma prona* Moeschler. Fig. 10.

Verhandl. d.k.k. zool bot. Ges. Wien 30: 443, 1880.

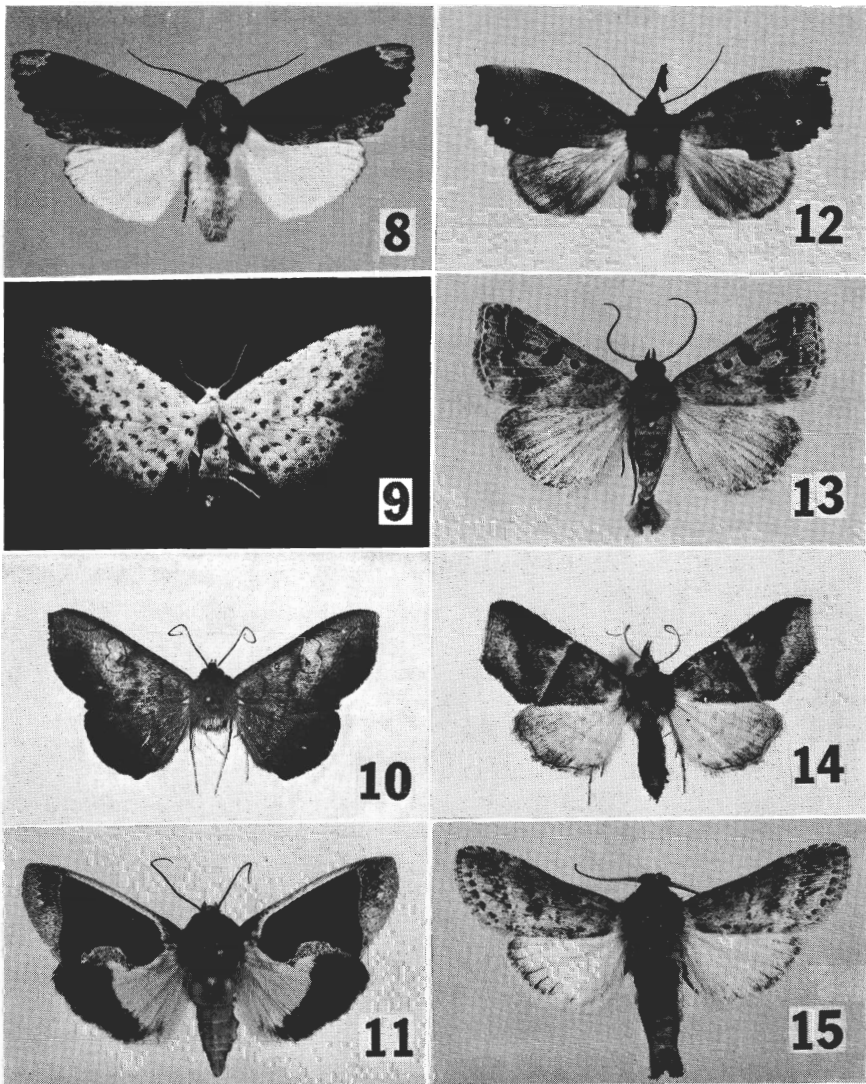
Welder Wildlife Refuge near Sinton, 14 November 1968, 1 ♂. The dark areas are dusky brown, the lighter areas yellowish.

*Gonodonta sinaldus* Guénéée. Fig. 11.

Spec. Gen. Lepid. 6: 372, 1852.

Santa Ana National Wildlife Refuge and Brownsville, late October to early November, twelve specimens. The dark areas of the forewings are deep chocolate brown, the light areas purplish powdery gray. The hindwings are orange-yellow with a gray border.

I have also a battered specimen of *Gonodonta sicheas* Cramer, taken at Garner State Park, 17 September 1961. It might have been a good specimen when it came,



Figs. 8-15. **8**, *Iscadia daemonalis* Dyar ♂, Artesia Wells, 28 Sept. 1971; 48 mm. **9**, *Sigela basipunctaria* Wlk. ♂, New Braunfels, 12 March 1972; 11.5 mm. **10**, *Orthogramma prona* Moesch. ♂, Welder Wildl. Ref., 14 Nov. 1968; 42 mm. **11**, *Gonodonta sinaldus* Gn. ♂, Santa Ana Nat. Wildl. Ref., 13 Oct. 1971; 35 mm. **12**, *Rhescipha servia* Cram. ♂, Welder Wildl. Ref., 16 Nov. 1966; 38 mm. **13**, *Glympis concors* Hbn. ♂, Brownsville, 5 Nov. 1969; 23 mm. **14**, *Radara anartoides* Wlk. ♂, Welder Wildl. Ref., 20 March 1969; 27 mm. **15**, *Pentobesa valta* Schaus ♂, Santa Ana Nat. Wildl. Ref., 7 April 1972; 36 mm.

but I overlooked it when I folded the sheet on which I had been collecting, and discovered it only the next morning.

*Rhescipha servia* Cramer. Fig. 12.

Pap. Exot. 4: 66; pl. 321, fig. e, 1782.

This insect with odd looking palps and oddly shaped wings, included in McDunnough's check list as *R. obtusa* Walker, is relatively rarer in collections than in nature. Of 34 specimens in my collection, 23 were taken in the Welder Wildlife Refuge and 8 in the Santa Ana National Refuge; two were taken in February, one in March, two in April, one in May, all the rest in October and November. The record of the other three is as follows: San Antonio, Ebony Hill Laboratory, 9 Sept. 1971, 1 ♀; Guadalupe River near New Braunfels, 12 March 1972, 1 ♂; Artesia Wells, LaSalle Co., Chaparral Wildlife Management Area, 11 June 1972, 1 ♀. The color is brown, more or less dusky, an extremely variable species.

*Radara anartoides* Walker. Fig. 14.

List Lep. Ins. Coll. Brit. Mus. 33: 843, 1865.

Welder Wildlife Refuge, near Sinton, 13 and 14 Nov. 1968, 7 ♂♂; 20 March 1969, 1 ♂. The forewings are different shades of reddish brown, the hindwings orange-yellow.

*Glympis concors* Hubner. Fig. 13.

Zutrag. Samml. exot. Schmett. Zweites Hundert, p. 22, figs. 315-316, 1823.

Of 18 specimens, 15 were taken in the two southernmost counties of Texas, Cameron Co. and Hidalgo Co., all in October and November; the record of the other three is as follows: Houston, 27 Nov. 1964, 1 ♀; Fort Davis, 5 Oct. 1969, 1 ♀; San Antonio, Ebony Hill Laboratory, 9 Sept. 1971, 1 ♂. The wings are brownish gray, patterned with black.

#### NOTODONTIDAE

*Pentobesa valta* Schaus. Fig. 15.

Trans. Entomol. Soc. London 49, p. 269, 1901.

Santa Ana National Wildlife Refuge, 7 April 1972, 3 ♂♂. The forewings are pale brownish gray, the hindwings whitish.

#### GEOMETRIDAE

*Scordylia atalanta* Guénée. Fig. 19.

Spec. Gen. 10: 383, 1857.

Santa Ana National Wildlife Refuge, 9 April 1966, 1 ♂; 18 November 1966, 2 ♀♀. The wings are egg-yolk yellow and velvety black.

*Aeschropteryx olivata* Warren. Fig. 20.

Nov. Zool. 11: 128, 1904.

Brownsville, 17 specimens taken in April, May, October and November. The insect resembles *Prochaerodes transversata*, but is smaller, more olivaceous, and the wings are shaped differently.

#### PYRALIDAE

*Evergestis consimilis* Warren. Fig. 21.

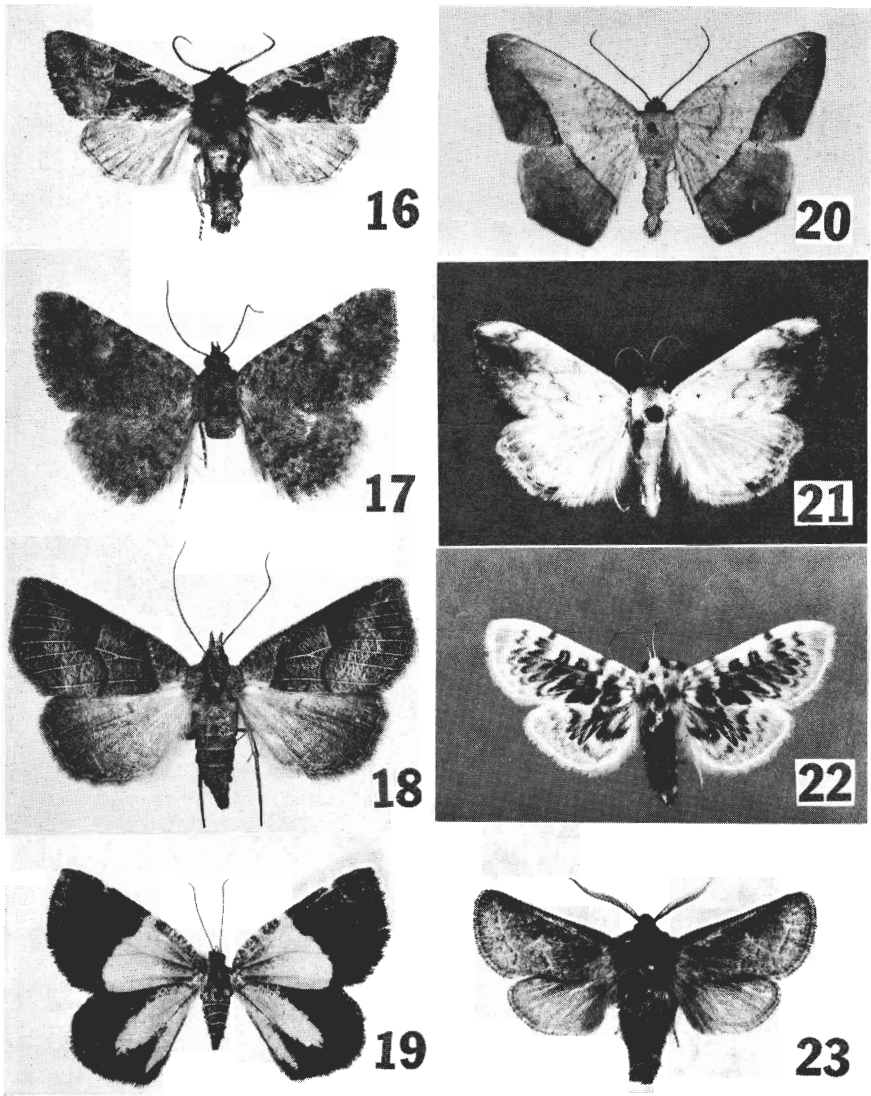
Ann. Mag. Nat. Hist., Ser. 6, 9: 433, 1892.

Davis Mountains, Mount Locke, 27 Aug. 1970, 2 ♂♂; Sierra Diablo Wildlife Management Area, 30 and 31 Aug. 1970, 3 ♂♂, 3 ♀♀. The wings are straw-yellow, blotched with purplish brown.

*Polygrammodes sanguinalis* Druce. Fig. 22.

Biol. Cent. Amer. 2: 218, 1895.

Brownsville, 27 Oct. 1970, 1 ♂. The wings are pale yellow and brownish red.



Figs. 16–23. 16, *Meropleon titan* Todd ♂, Canadian, 27 Sept. 1968; 40 mm. 17, *Matigramma psegnapteryx* Dyar ♂, Garner State Pk., 24 March 1965; 31 mm. 18, *Herminodes stigmaphiles* Dyar ♀, Big Bend Nat. Pk., Chihuahu Desert near Nugent Mt., 21 Sept. 1971; 38 mm. 19, *Scordylia atalanta* Gn. ♀, Santa Ana Nat. Wildl. Ref., 18 Nov. 1966; 29 mm. 20, *Aeschropteryx olivata* Warren ♂, Brownsville, 8 May 1967; 40 mm. 21, *Evergestis consimilis* Warren ♂, Sierra Diablo Wildl. Mgt. Area, 30 Aug. 1970; 25.5 mm. 22, *Polygrammodes sanguinalis* Druce ♂, Brownsville, 27 Oct. 1970; 29 mm. 23, *Givira redtenbacheri* Hammerschmidt ♂, Big Bend Nat. Pk., Green Gulch, 28 March 1971; 31 mm.

## COSSIDAE

*Givira redtenbacheri* (Hammerschmidt). Fig. 23.

Naturwissenschaftliche Abhandlungen Haidinger 2: 151, 1847.

Common in Big Bend National Park from late March until early May. It flies sympatrically with *Heterocoma albistriga* B. and McD., which it resembles, although it is a much darker gray. *G. redtenbacheri* is more common in Green Gulch, *H. albistriga* in the Chihuahu Desert.

This random selection of 23 species, chosen among those which have already been described, does not exhaust my reserve of interesting moths flying in Texas. As time permits I intend to carry on with another installment.

## ACKNOWLEDGMENTS

I am deeply indebted to many individuals who generously contributed much time and information, and without whose careful work of identification this paper would not have been possible. To all of the following I express my sincere thanks: Drs. D. C. Ferguson, J. G. Franclemont, D. F. Hardwick, R. W. Hodges, E. G. Munroe, F. H. Rindge and E. L. Todd.

It is a pleasure to acknowledge with thanks the always gratifying cooperation of the administration and managers of the National Parks and Refuges and State owned Wildlife Management Areas.

---

CHROMOSOME NUMBERS FOR *PLEBEJUS (ICARICIA) ACMON*,  
*P. LUPINI*, AND *P. NEURONA* (LYCAENIDAE)

CARLL GOODPASTURE

Department of Entomology, University of California, Davis, California 95616

The *Plebejus acmon* (Westwood & Hewitson) group is comprised of one easily recognized species, *P. neurona* (Skinner), and two closely related, less distinct entities, *P. acmon* and *P. lupini* (Boisduval). The present paper is a report of the results of cytological examinations of certain populations of these species.

Chromosome complements of one population of *P. neurona*, two of *P. acmon*, and three of *P. lupini* from southern and central California have been examined. Field collected adults and laboratory reared pupae were used in this study. Specimens fixed in the field were treated and subsequently examined following the procedure of Emmel (1968).